



EVERGREEN

Imagine your city with nature

Natural School Grounds for Play & Learning



Dewdney Elementary Nature Playground Concept Plan

Learning Through Play

How This Idea Came About

- Rebranding of Dewdney Elementary to include an outdoor learning component and environmental orientation
- Emerging research on the benefits of hands-on experiential learning
- The need to explore - Outdoor learning
- Full Day Kindergarten - Learning through play
- Provide Shade & Weather Protection

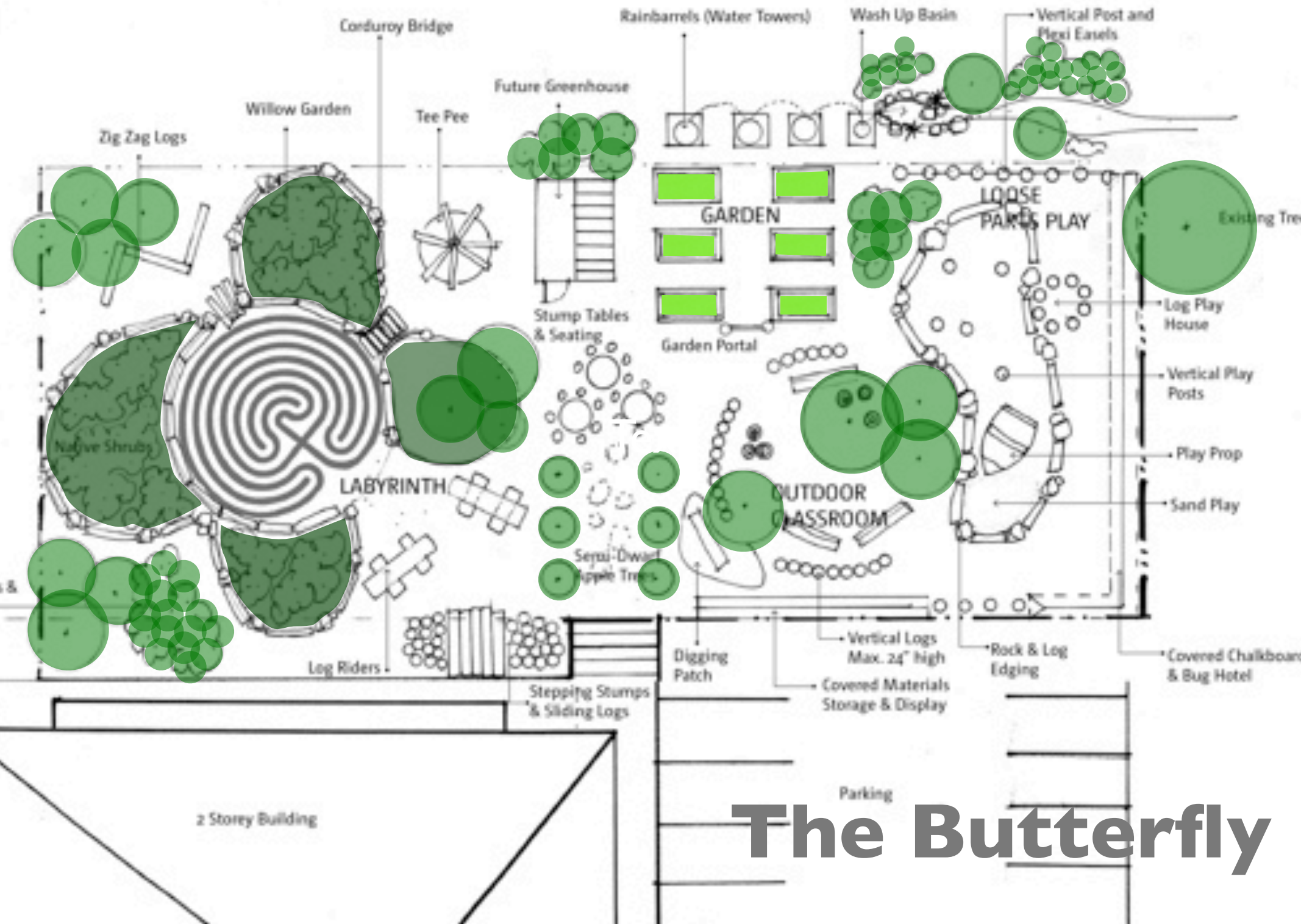




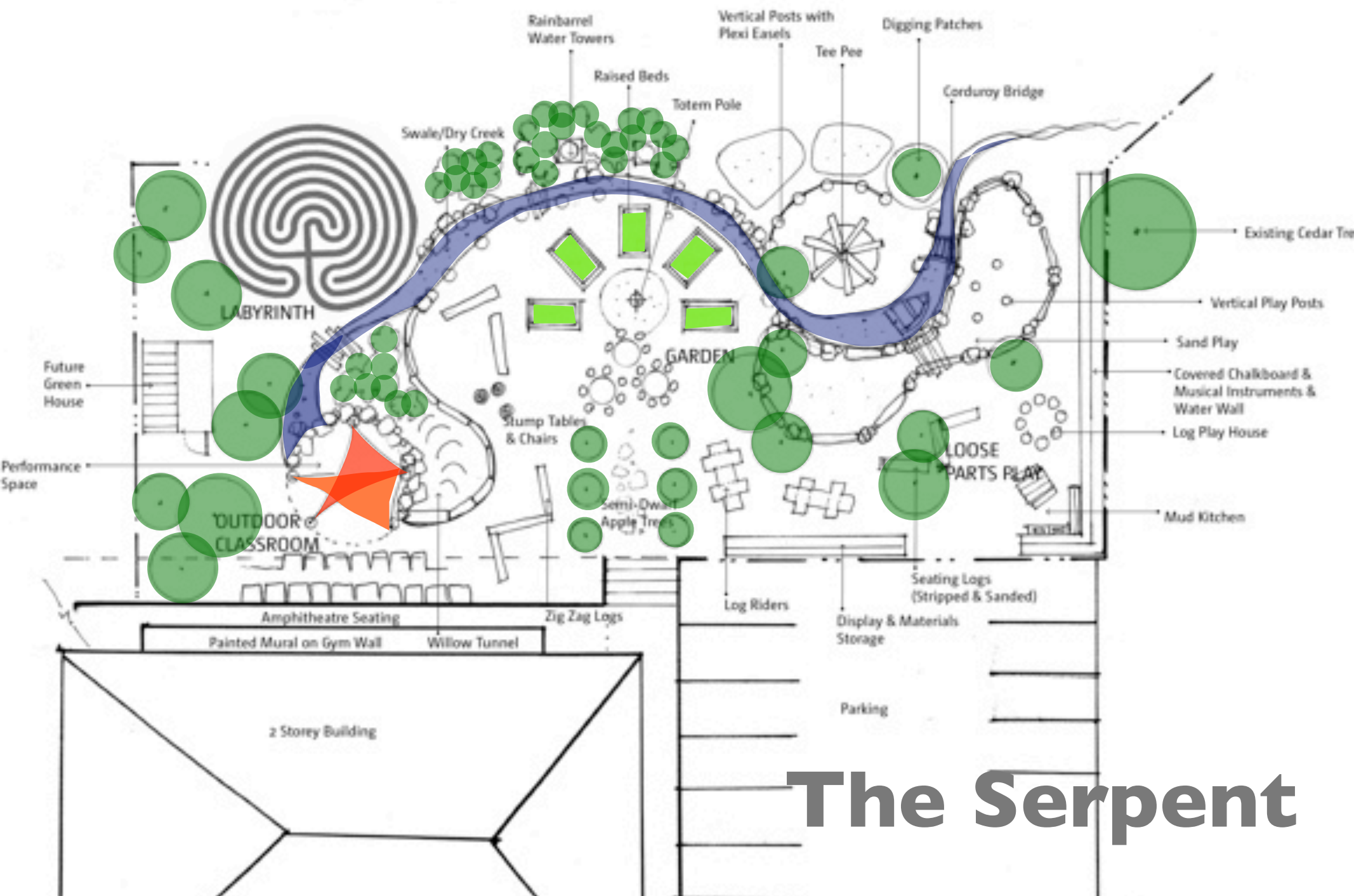
TWO OPTIONS TO CONSIDER

THE SERPENT AND THE BUTTERFLY

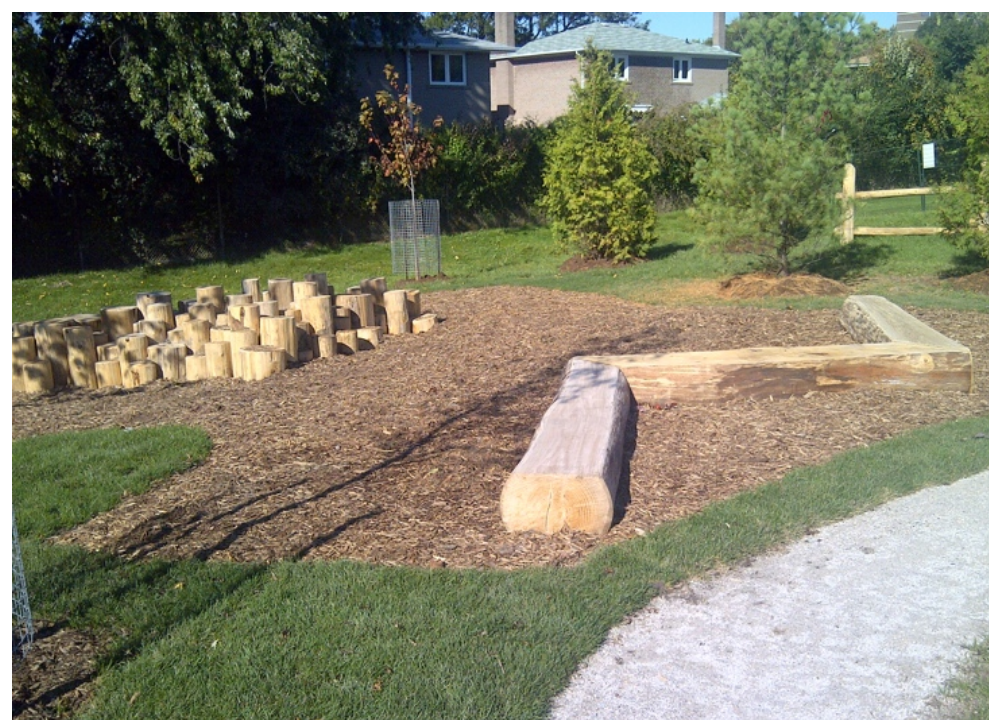




The Butterfly



The Serpent









IMAGINATIVE PLAY WITH LOGS











WATER COLLECTION





CONVEYANCE



WATER PLAY

















NATIVE PLANTS & WILLOW



PLANT FOR KIDS









ARTFUL TOUCHES



ARTISTIC EXPRESSION



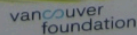
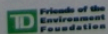
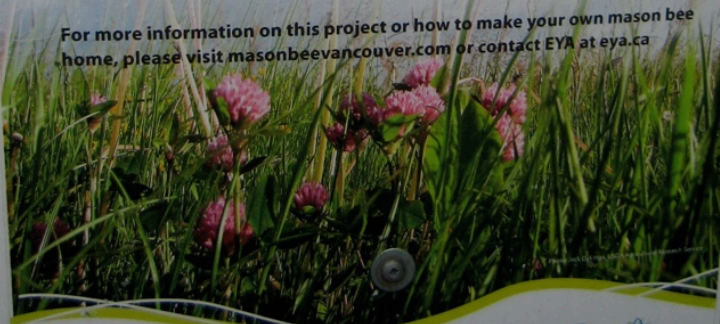
bees

All over North America bees are struggling, their populations threatened by habitat loss, pesticide use, mites and disease. This is a serious concern given that one third of our food, particularly fruits and vegetables, rely on their pollination activities. Can you imagine your world without apples or blueberries?

This is a contemporary home for the Blue Orchard Mason Bee (*Osmia lignaria*), a bee species native to our region. Over 150 bee homes have been provided by the Environmental Youth Alliance (EYA) and its partners and sponsors, installed in public and private spaces across Vancouver. They are being maintained and monitored by community volunteers committed to supporting these amazing insects.

You can help out too by planting trees and shrubs that attract bees and by building your own Mason Bee homes out of wood, plastic straws, rolled newspaper – whatever materials you have on hand! The bees, our food crops, our gardens and the urban ecology will thank you for it.

For more information on this project or how to make your own mason bee home, please visit masonbeevancouver.com or contact EYA at [eya.ca](mailto:eya@eya.ca)



SIGNS WITH MESSAGES



