

Dewdney Elementary School C.O.R.E.

(Community Outdoor Recreation and
Environment)

Education Program



"Let Nature be your teacher" (William Wordsworth)

What is C.O.R.E.

Community
Outdoor
Recreation
Environment



CORE Vision statement: *Making connections between outdoor experiences and classroom learning*



What does an outdoor program look like?

- **Exploring**
- **Inquiry**
- **Discovery**



Beautifying



Gardening



Farming



Outdoor Safety

- **Wilderness Survival**
- **Avalanche Education**
- **Rock climbing Information**
- **Swim to Survive**
- **Boating Sense**

Outdoor Recreation

- **Hiking**
- **Nature Walks**
- **Snow fun**
- **Water activities**



Classroom Connections

- Worm composting
- Salmon tanks
- Butterflies
- Nature Journals
- Recycling



Aboriginal Learning

- Stories and traditions
- Fishing
- Elder in Residence
- Healing herbs
- Art and culture



CORE Mission Statement:

Motivating kids to engage in their natural surroundings, local agricultural community, and the broader ecological world through an adventure and discovery-based curriculum.



Research

Benefits of Outdoor Education

- ✓ *...learning outside the classroom increases pupil engagement, improves achievement, can progress attainment, and links to improved attendance.*
- ✓ *The benefits of the outdoor classroom are clearly not confined to students. Teachers noted improved relationships with students, personal development in the teaching, and curriculum benefits.*



What is an outdoor classroom?

Staff, students and parents outside learning and Experiencing...

- **Science**
- **Literature**
- **Math**
- **Social studies**

.....for part or all of the day



What about the curriculum?

- **Teachers integrate their lessons (nature journal)**
- **Project based learning (salmon life cycle)**
- **Experiential learning (gardening and healthy living)**
- **Regular classroom instruction**



How will it impact our school?

- **Build relationships**
- **Engage students**
- **Improve student learning, health and social responsibility (research)**
- **Develop an identity**
- **Attract students**
- **Offer a unique niche for Dewdney**
- **Connections with community organizations**



What about the Risk Management?

- **Schools Protection Plan Coverage**
- **Qualified/trained community leaders**
- **SD 75 Risk Management procedure**



What about the cost?

- **Targeted Fundraising by PAC**
- **Grants**
- **Community volunteers**
- **Donations of service, goods, expertise**
- **Forestry partnerships**
- **Some field trip cost**



Current Community Connections

- **UFV**
- **Science World**
- **Youth Unlimited**
- **Mission Forestry**
- **Hemlock**
- **FVRD**
- **Aboriginal Community Members**



What are some plans for the future?

- Nature learning center (partially covered outdoor area)
- Expansion of gardening program
- Land, snow, water recreation activities
- Develop a middle school connection
- Engage the broader community

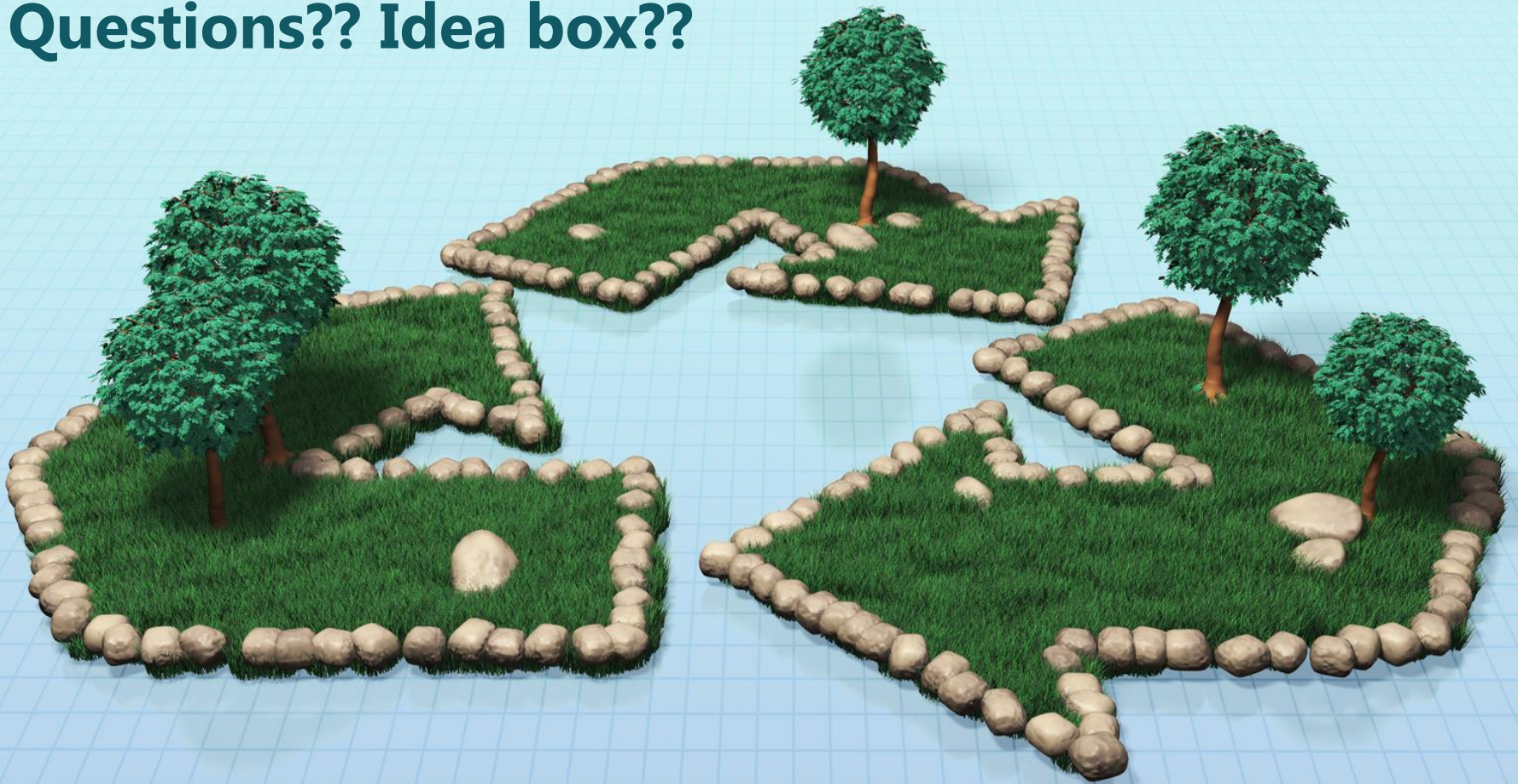


How can you be involved?

- Are you a gardener?
- Are you a builder?
- Are you a farmer?
- Have you worked in any resource industry (sawmill, gravel)?
- Are you a life long learner?
- Can you share stories?
- Are you a "treasured" generation?
- Are you a parent?
- Do you belong to an organization that can help us?
- Do you make jam, pies or nettle soup?
- Can you help supervise students?
- Do you need CRC paperwork?
- Can you help find and write grants?
- The list keeps going.....



Questions?? Idea box??



Dewdney Elementary School

**C.O.R.E. (Community Outdoor Recreation and Environment)
Education Program**

Thank You!

